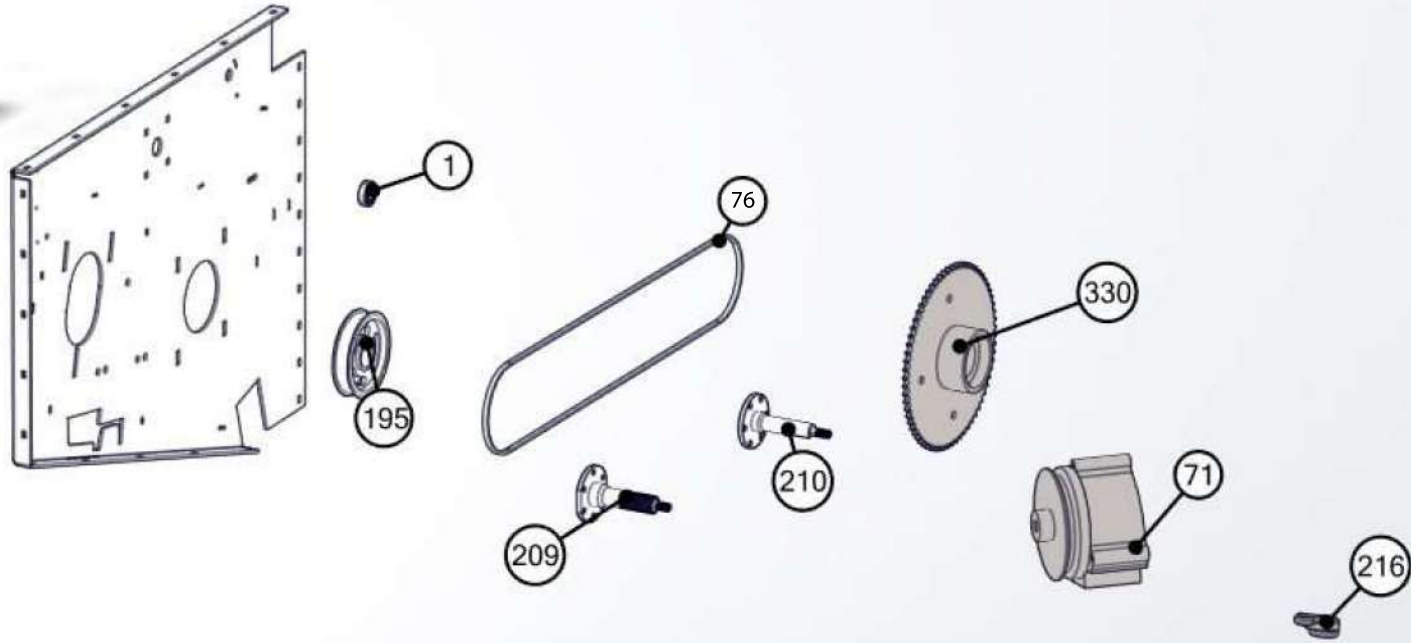


| Description | BOM ID | Qty |
|--------------------|--------|-----|
| KRB-ASA 60.38 | 69 | 1 |
| KRB-SNR UCF207 | 62 | 2 |
| KRB-PF207 | 61 | 1 |
| KRB-DIN 625 - 6005 | 74 | 9 |

| Description | BOM ID | Qty |
|---------------------|--------|-----|
| KRB-FLANŞ35 | 53 | 2 |
| KRB-FLANŞ30 | 52 | 1 |
| KRB-BEARING YEL 207 | 42 | 5 |
| KRB-ASA 60.18 | 39 | 3 |

| Description | BOM ID | Qty |
|-------------|--------|-----|
| KRB-ZİNCİR2 | 36 | 2 |
| KRB2-1026 | 22 | 1 |
| KRB5-1016 | 75 | 23 |
| KRB-PISTON | 5 | 8 |

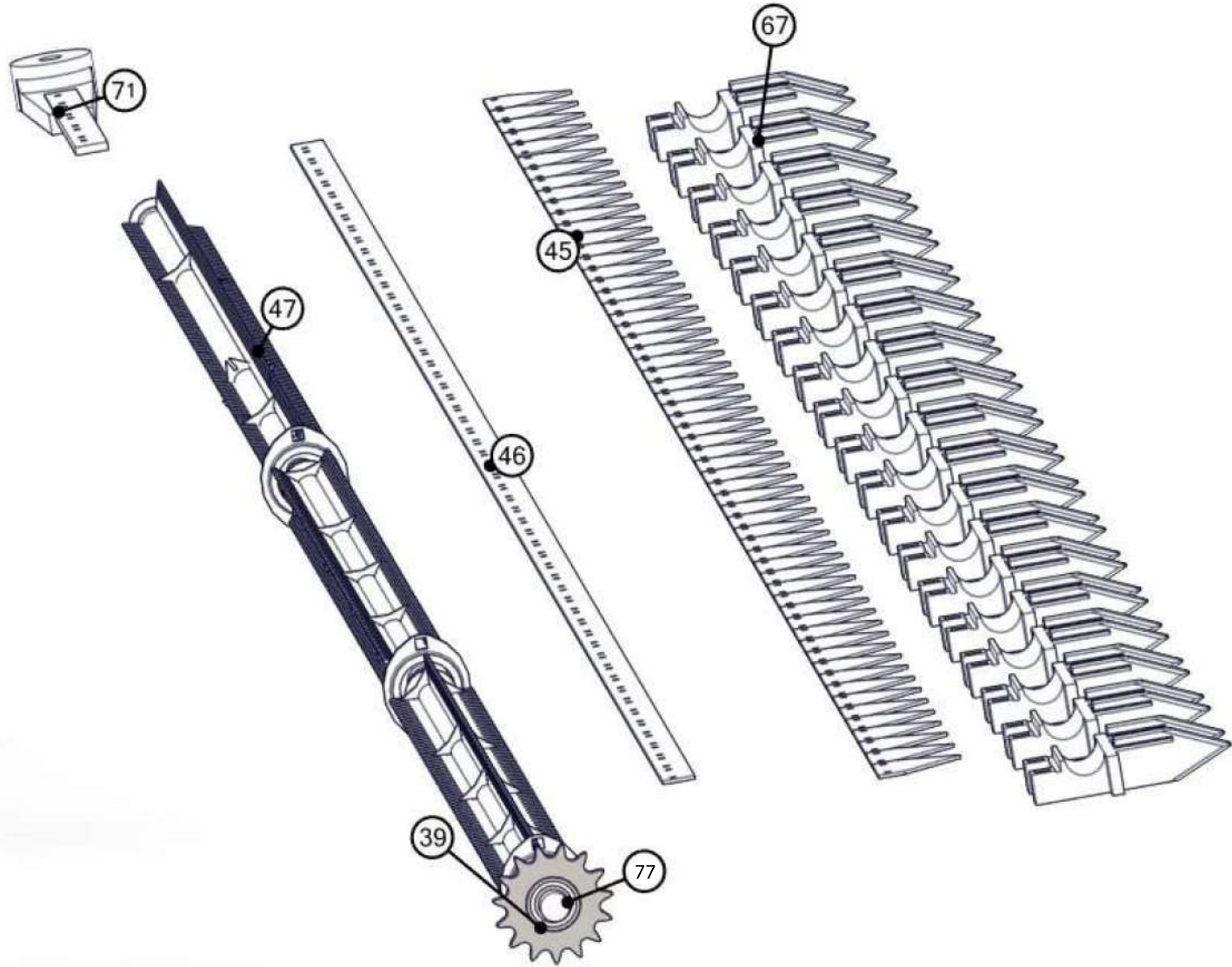
| Description | BOM ID | Qty |
|--------------|--------|-----|
| KR-PF 207-35 | 60 | 8 |



| Description | BOM ID | Qty |
|----------------|--------|-----|
| KRB-KASNAK1 | 195 | 1 |
| KRB-KAYIS1 | 76 | 2 |
| KRB-FREZE MIL1 | 209 | 1 |

| Description | BOM ID | Qty |
|---------------|--------|-----|
| KRB-MIL2 | 210 | 2 |
| KRB-ASA 60.68 | 330 | 1 |
| KRB-SANZIMAN | 105 | 1 |

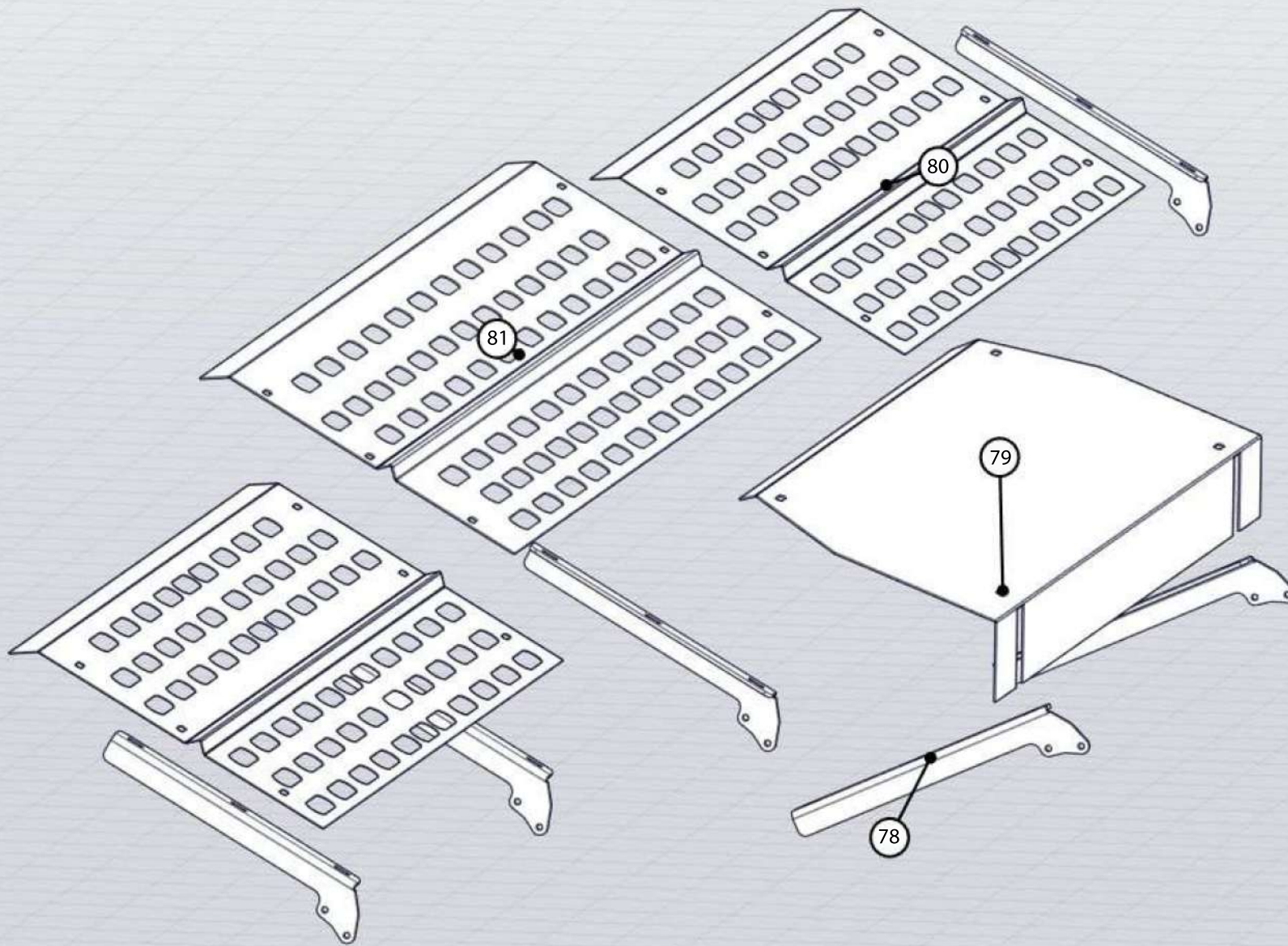
| Description | BOM ID | Qty |
|---------------------------------|--------|-----|
| KRB-SANZIMAN KOL | 216 | 1 |
| DIN 625 - 6205 - 12,DE,AC,12 68 | 1 | 1 |



| Description | BOM ID | Qty |
|----------------|--------|-----|
| KRB-BIÇAK KOLU | 71 | 1 |
| KRB-ZIPKA | 67 | 19 |
| KRB-MERDANE | 47 | 4 |

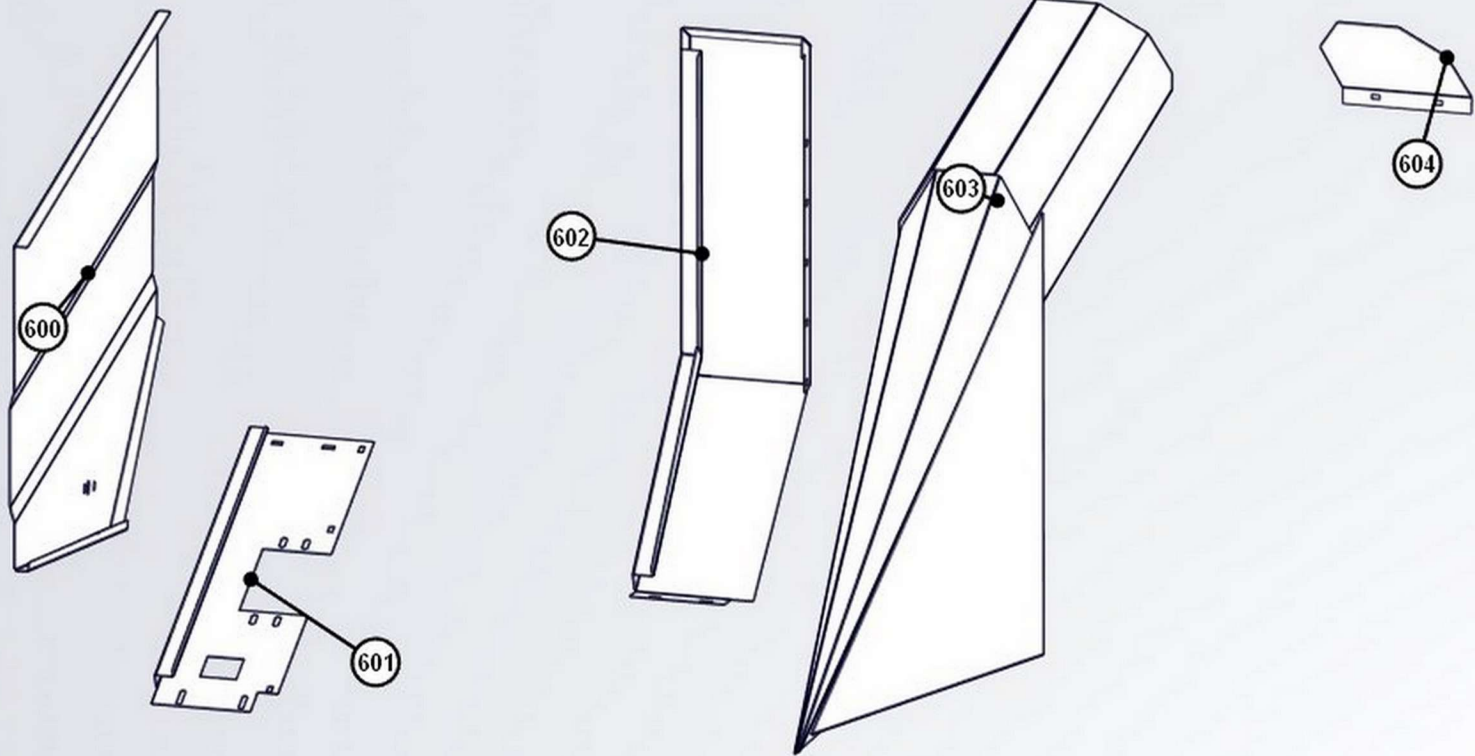
| Description | BOM ID | Qty |
|----------------------------|--------|-----|
| KRB-BIÇAK DİZİLİM KÖŞEBENT | 46 | 1 |
| KRB-BIÇAK | 45 | 60 |
| ASA 60.18 | 39 | 3 |

| Description | BOM ID | Qty |
|---------------------------------|--------|-----|
| DIN 625 - 6005 - 14,SI,NC,14_68 | 77 | 3 |



| Description | BOM ID | Qty |
|---------------|--------|-----|
| KRB5-1039 (S) | 78 | 6 |
| KRB2-1016 | 79 | 14 |

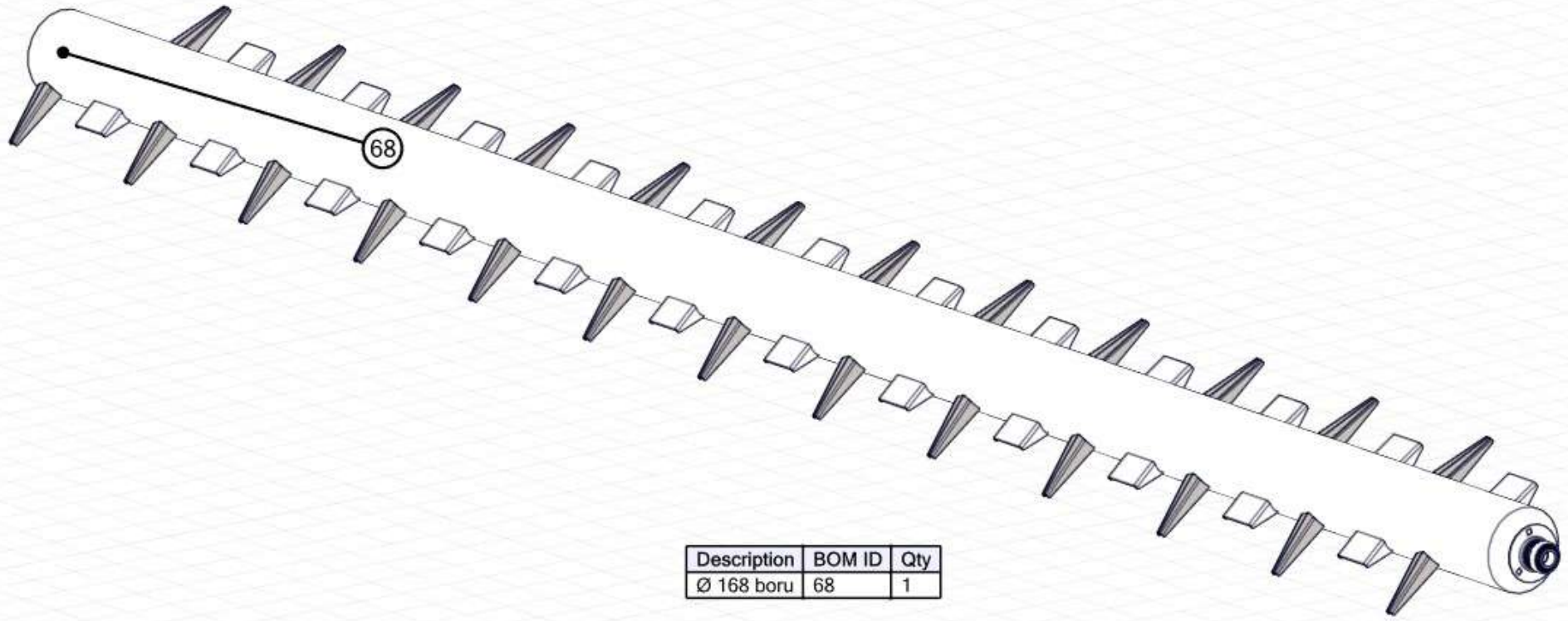
| Description | BOM ID | Qty |
|-------------|--------|-----|
| KRB1-2001 | 80 | 2 |
| KRB1-1001 | 81 | 1 |



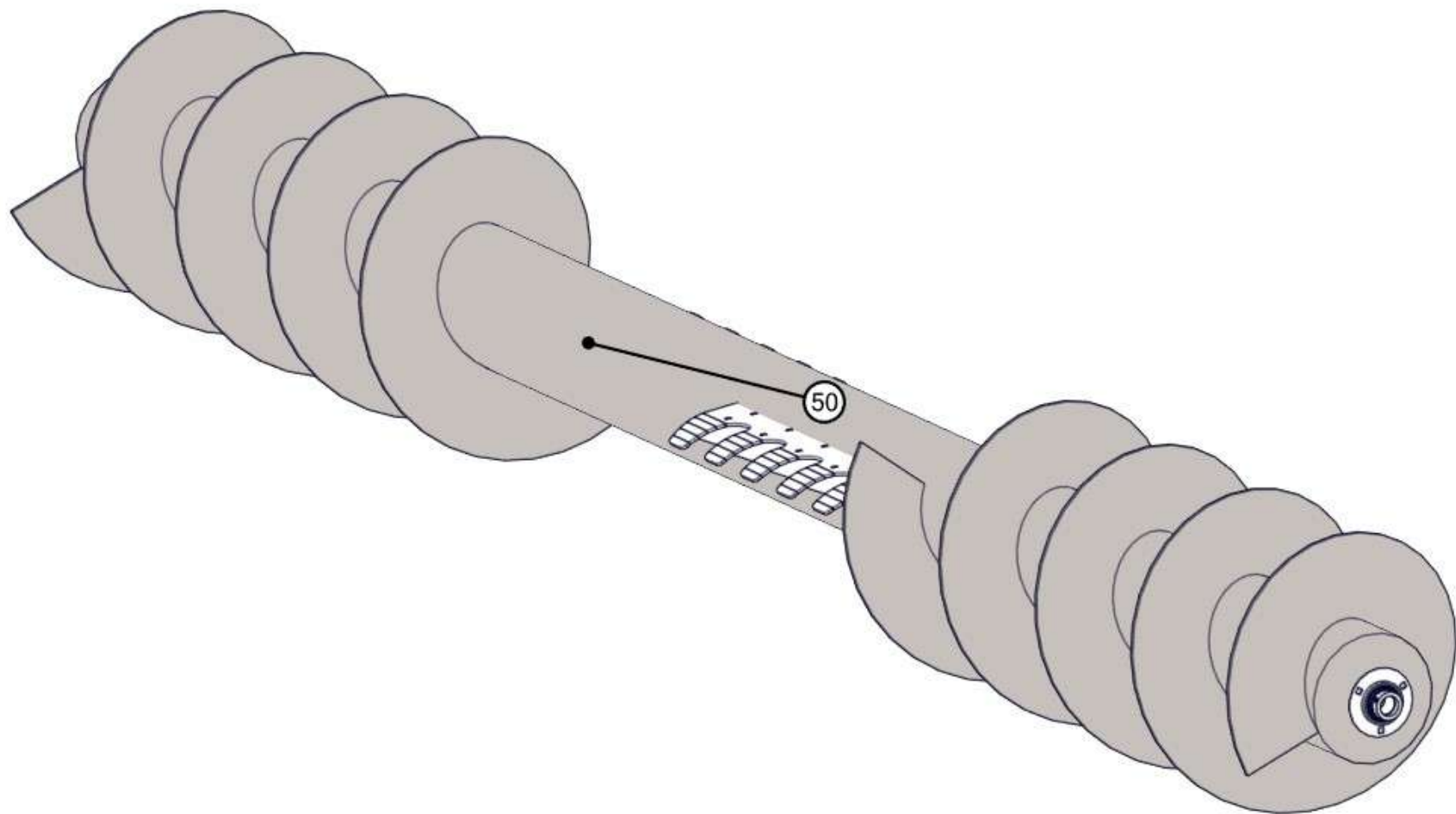
| Description | BOM ID | Qty |
|-------------|--------|-----|
| KRB2-1012 | 600 | 1 |
| KRB2-1025 | 601 | 1 |

| Description | BOM ID | Qty |
|-------------|--------|-----|
| KRB2-1022 | 602 | 1 |
| KRB2-1004 | 603 | 1 |

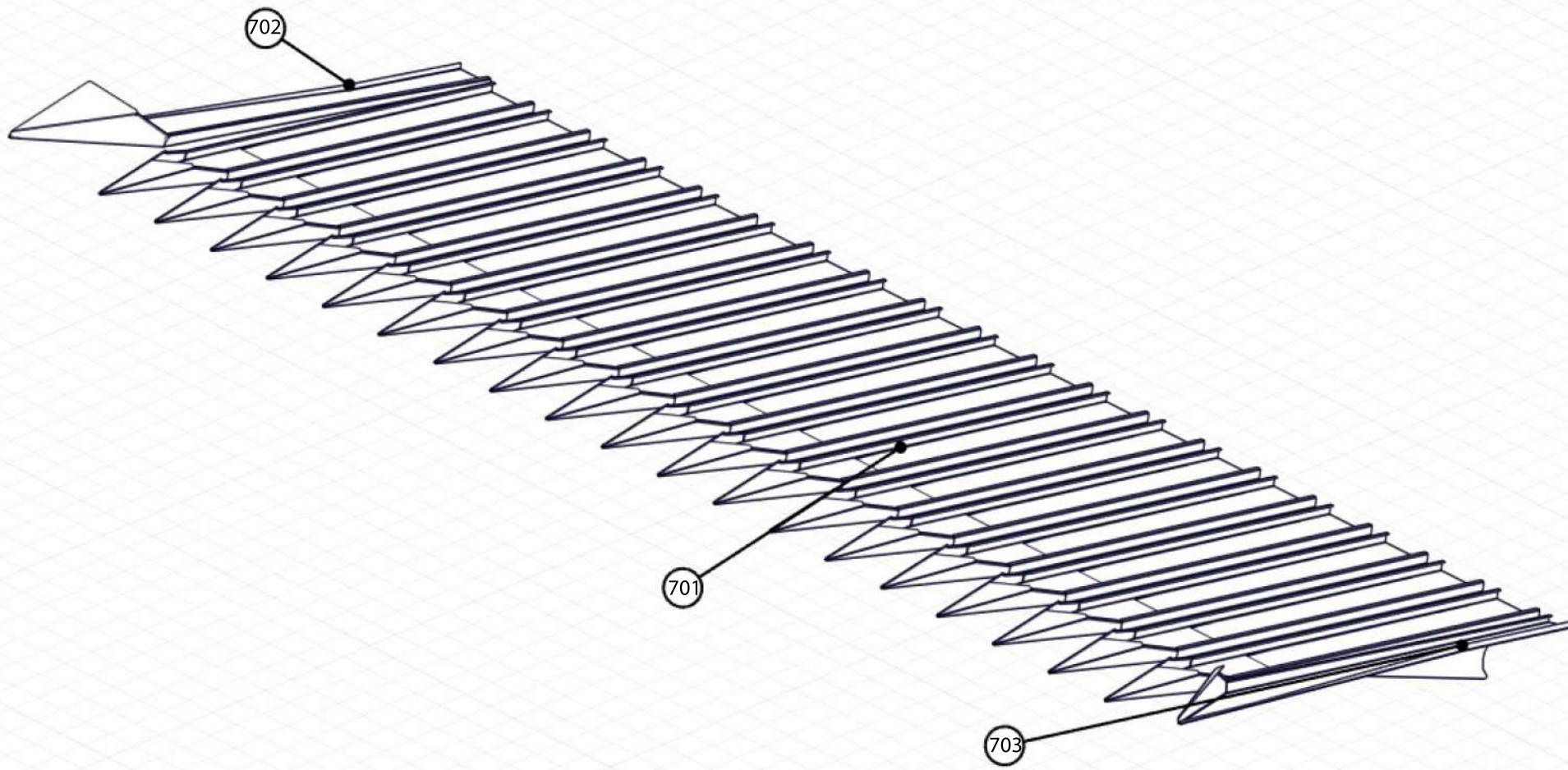
| Description | BOM ID | Qty |
|-------------|--------|-----|
| KRB2-1005 | 604 | 1 |



| Description | BOM ID | Qty |
|-------------|--------|-----|
| Ø 168 boru | 68 | 1 |

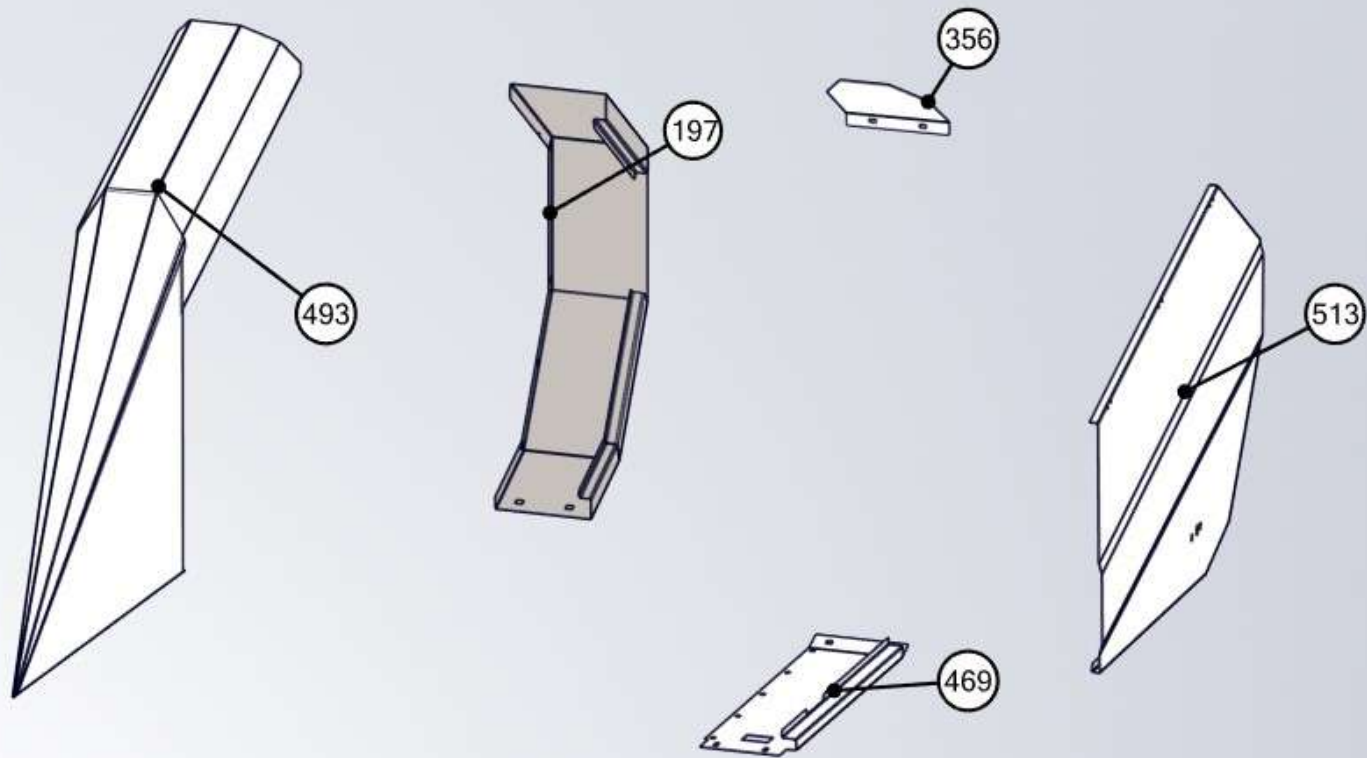


| Description | BOM ID | Qty |
|----------------|--------|-----|
| helezon montaj | 50 | 1 |



| Description | BOM ID | Qty |
|----------------|--------|-----|
| KRB2-6001 | 701 | 38 |
| KRB2-1007(SAG) | 702 | 1 |

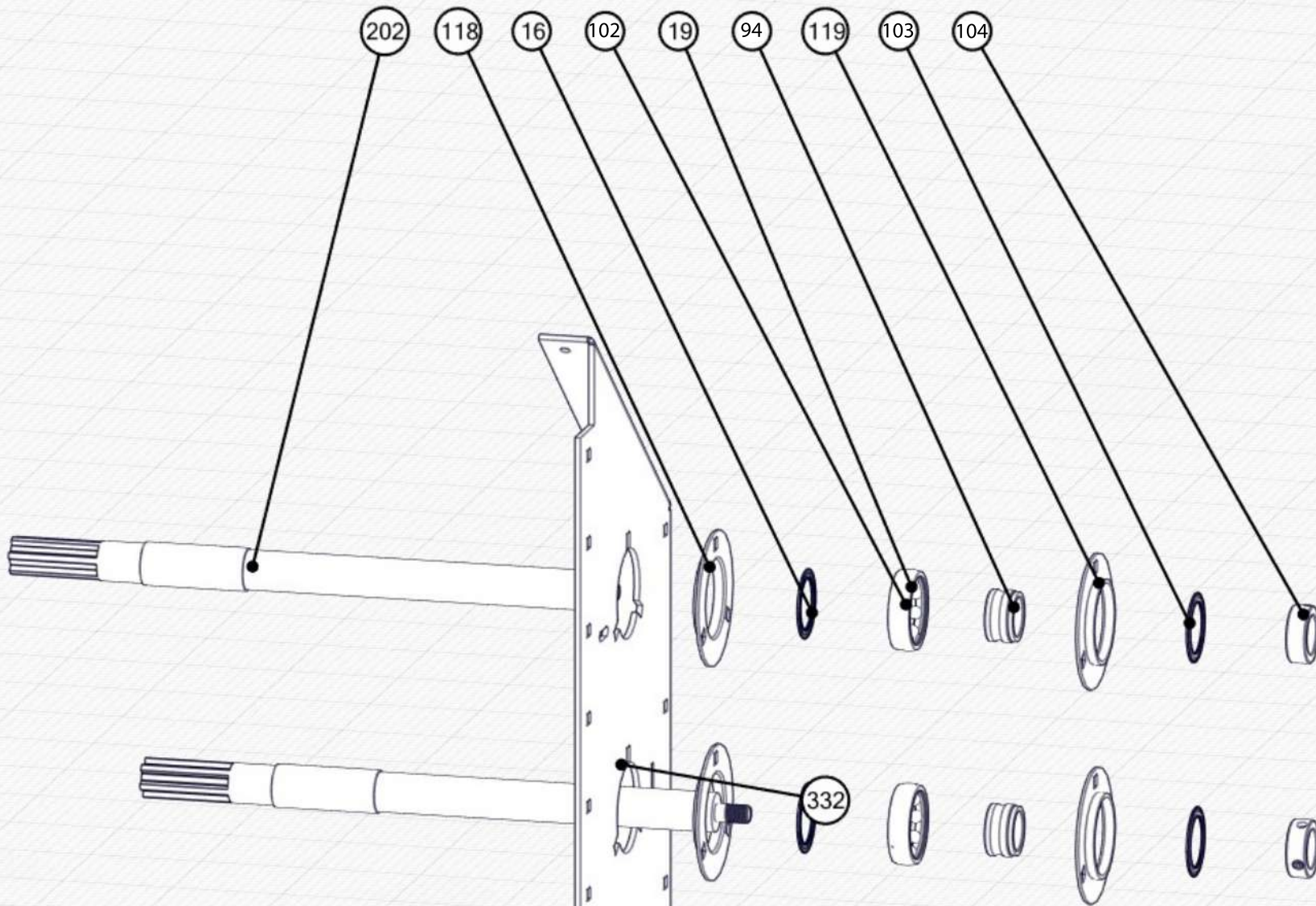
| Description | BOM ID | Qty |
|----------------|--------|-----|
| KRB2-1006(SOL) | 703 | 1 |



| Description | BOM ID | Qty |
|-------------|--------|-----|
| KRB2-1015 | 513 | 1 |
| KRB2-1004 | 493 | 1 |

| Description | BOM ID | Qty |
|-------------|--------|-----|
| KRB2-1008 | 469 | 1 |
| KRB2-1005 | 356 | 1 |

| Description | BOM ID | Qty |
|-------------|--------|-----|
| KRB2-1009 | 197 | 1 |

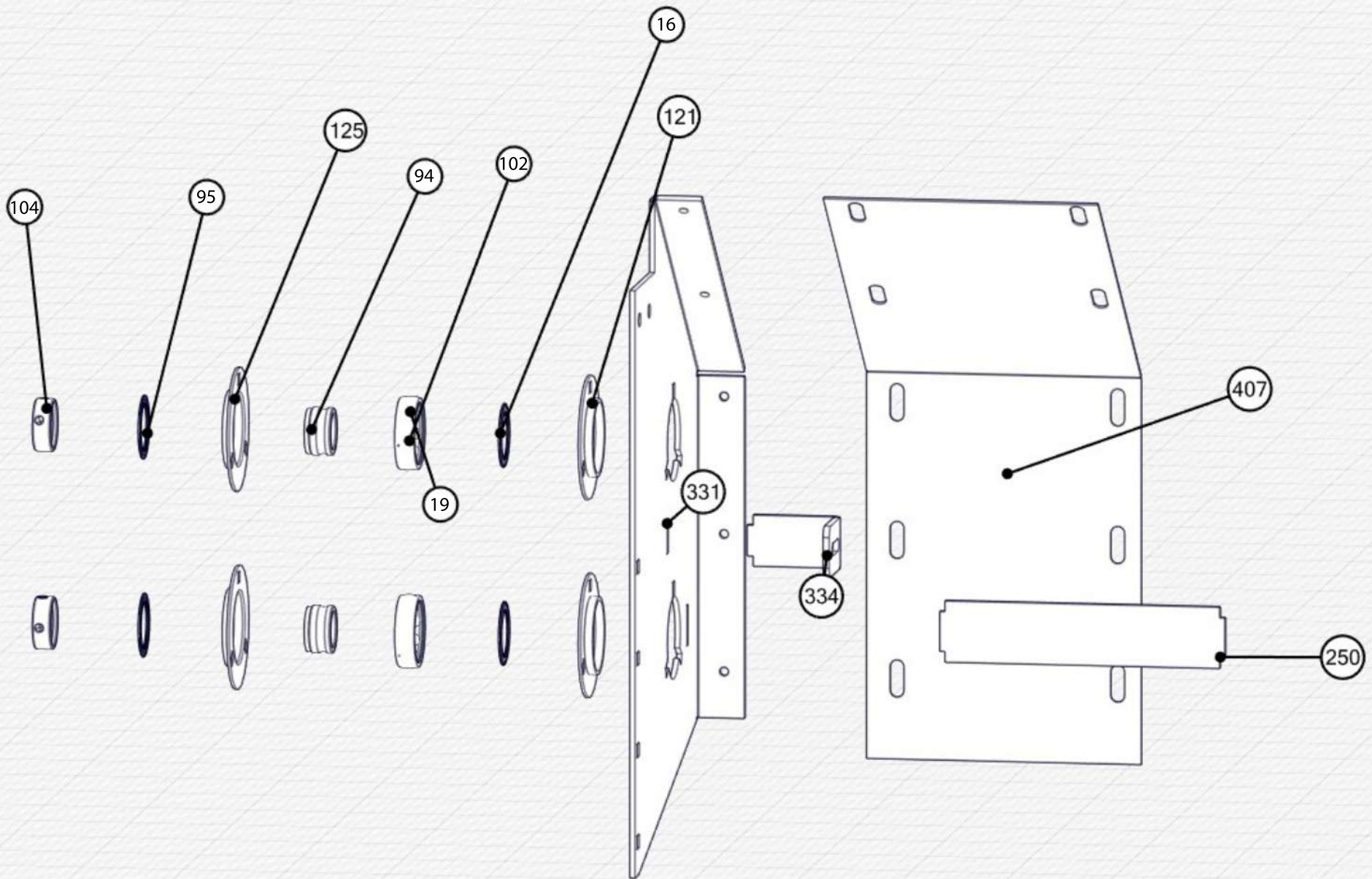


| Description | BOM ID | Qty |
|---------------------|--------|-----|
| KRB5-1013 | 332 | 1 |
| KRB-SOL UZUN MİL | 202 | 1 |
| KRB-PF 205-30 FLANŞ | 119 | 1 |

| Description | BOM ID | Qty |
|---------------------------|--------|-----|
| KRB-PF 205-35 | 118 | 1 |
| KRB-BEARİNG YET 207-2-061 | 19 | 1 |
| KRB-BEARİNG YET 207-2-011 | 102 | 1 |

| Description | BOM ID | Qty |
|---------------------------|--------|-----|
| KRB-BEARİNG YET 207-2-041 | 103 | 1 |
| KRB-BEARİNG YET 207-2-051 | 16 | 1 |
| KRB-BEARİNG YET 207-2-031 | 104 | 1 |

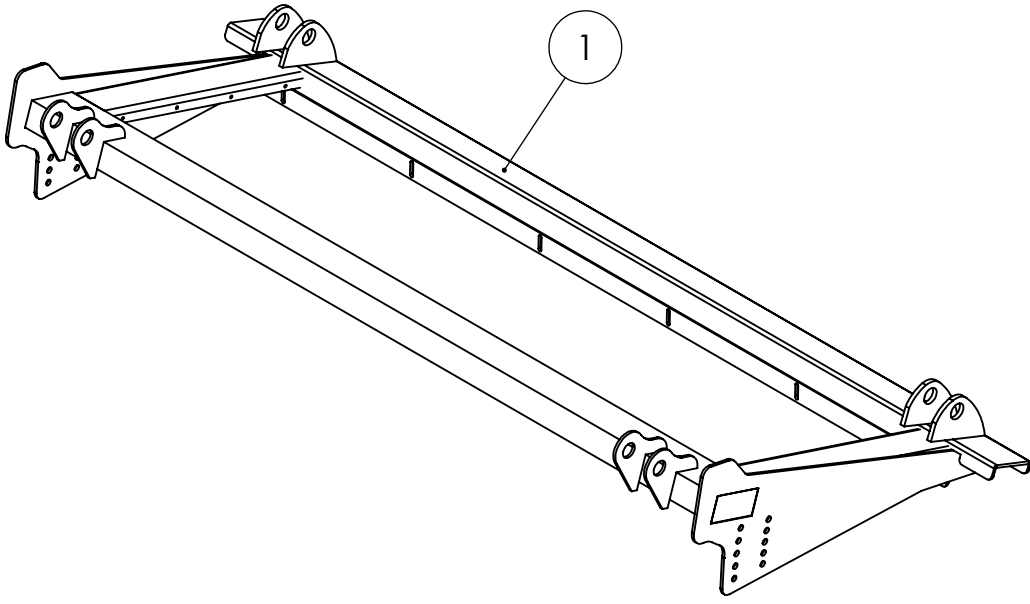
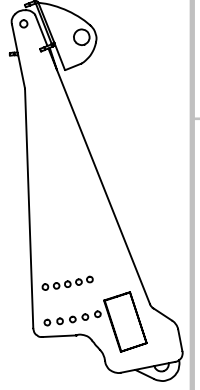
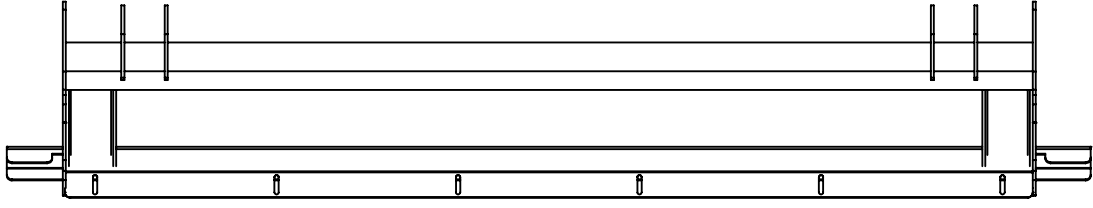
| Description | BOM ID | Qty |
|---------------------------|--------|-----|
| KRB-BEARİNG YET 207-2-021 | 94 | 1 |



| Description | BOM ID | Qty |
|-------------|--------|-----|
| KRB2-1024 | 407 | 1 |
| KRB6-1012 | 334 | 1 |
| KRB5-1014 | 331 | 1 |
| KRB5-1021 | 250 | 1 |

| Description | BOM ID | Qty |
|---------------------------|--------|-----|
| KRB-PF 207-35 | 125 | 1 |
| KRB-PF 207-35 | 121 | 1 |
| KRB-BEARING YET 207 2-041 | 95 | 1 |
| KRB-BEARING YET 207 2-021 | 94 | 1 |

| Description | BOM ID | Qty |
|---------------------------|--------|-----|
| KRB-BEARING YET 207 2-031 | 104 | 1 |
| KRB-BEARING YET 207 2-011 | 102 | 1 |
| KRB-BEARING YET 207 2-061 | 19 | 1 |
| KRB-BEARING YET 207 2-051 | 16 | 1 |



| ÖĞE NO. | PARÇA NUMARASI | TANIM | MİKT. |
|---------|----------------|-------|-------|
| 1 | KRB-C-1001 | | 2 |
| 1 | KRB-C-1002 | | 1 |
| 3 | KRB-C-1003 | | 2 |
| 4 | KRB-C-1004 | | 4 |
| 5 | KRB-C-1005 | | 4 |
| 6 | KRB-C-1006 | | 1 |

AKSİ BELİRTİLMEDİĞİ SÜRECE:
BOYUTLAR MİLMETREDİR
YÜZEY ÇILASI:
TOLERANSLAR:
DOĞRUSAL:
AÇISAL:

BİTİRME:

KESKİN KENARLARI
PAHLAYIN VE
KIRIN

TEKNİK RESMİ ÖLÇEKLENDİRMEYİN

REVİZYON

| İSİM | İMZA | TARİH |
|--------|------|-------|
| ÇİZEN | | |
| DENET. | | |
| ONAY. | | |
| ÜRET. | | |
| KALİTE | | |

BAŞLIK:

MALZEME:

RESİM NO.

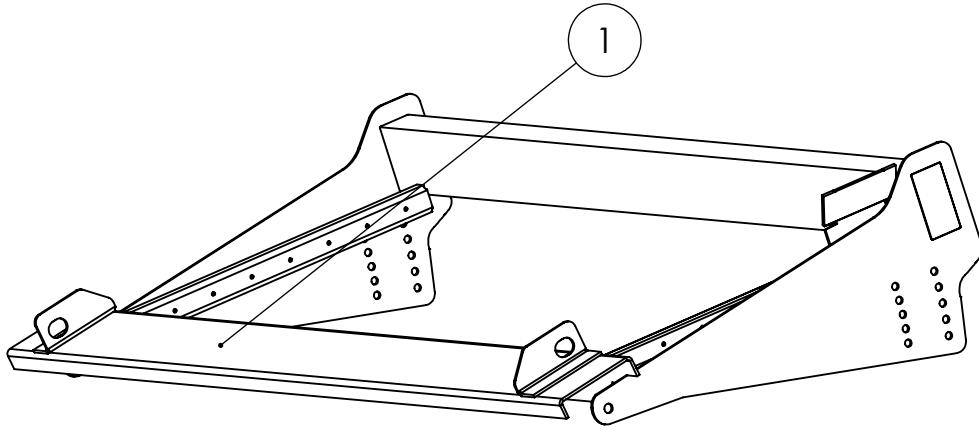
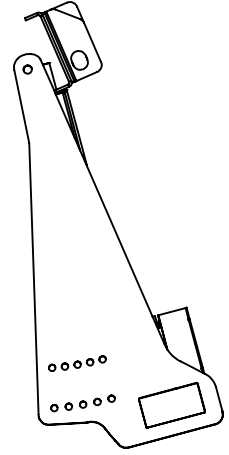
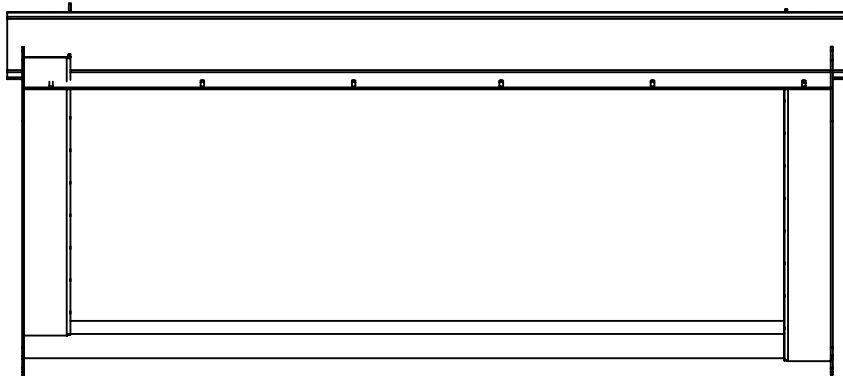
CLASS KİT

A3

AĞIRLIK:

ÖLÇEK:1:50

SAYFA 1 / 1



| ÖĞE NO. | PARÇA NUMARASI | TANIM | MİKT. |
|---------|----------------|-------|-------|
| 1 | KBR-J-1001 | | 2 |
| 1 | KBR-J-1002 | | 1 |
| 3 | KBR-J-1003 | | 1 |
| 4 | KBR-J-1004 | | 2 |
| 5 | KBR-J-1005 | | 1 |
| 6 | KBR-J-1006 | | 2 |

AKSİ BELİRTİLMEDİĞİ SÜRECE:
BOYUTLAR MİLMETREDİR
YÜZEY CİLASI:
TOLERANSLAR:
DOĞRUSAL:
AÇISAL:

BİTİRME:

KESKİN KENARLARI
PAHLAYIN VE
KIRIN

TEKNİK RESMİ ÖLÇEKLENDİRMEYİN

REVİZYON

| İSİM | İMZA | TARİH |
|--------|------|-------|
| ÇİZEN | | |
| DENET. | | |
| ONAY. | | |
| ÜRET. | | |
| KALİTE | | |

BAŞLIK:

MALZEME:

RESİM NO.

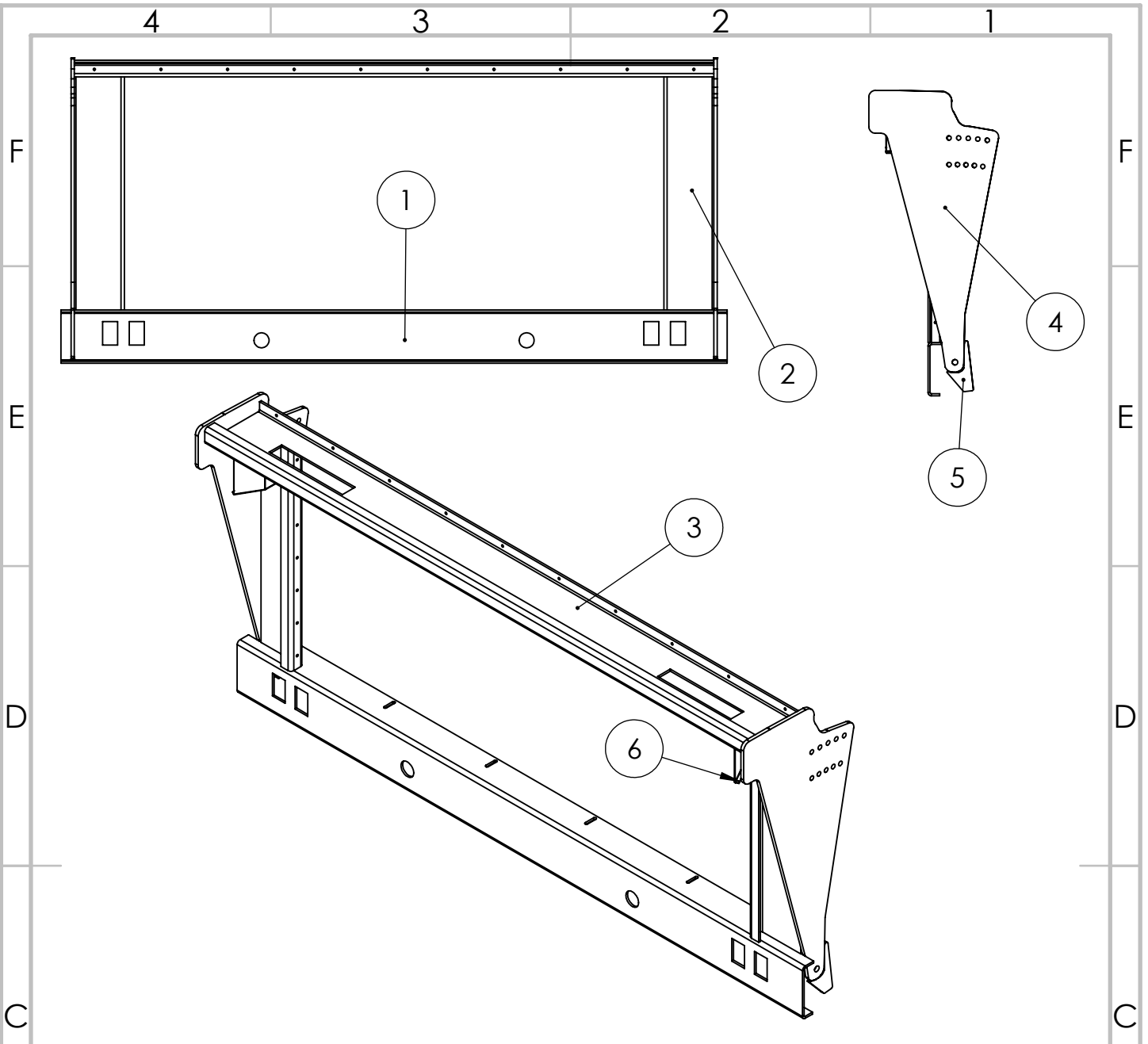
JOHN DEERE KİT

A3

AĞIRLIK:

ÖLÇEK:1:50

SAYFA 1 / 1



| ÖĞE NO. | PARÇA NUMARASI | TANIM | MİKT. |
|---------|----------------|-------|-------|
| 1 | KRB-M-1001 | | 1 |
| 2 | KRB-M-1002 | | 2 |
| 3 | KRB-M-1003 | | 1 |
| 4 | KRB-M-1004 | | 2 |
| 5 | KRB-M-1005 | | 2 |
| 6 | KRB-M-1006 | | 2 |

AKSİ BELİRTİLMEDİĞİ SÜRECE:
BOYUTLAR MİLMETREDİR
YÜZEY ÇILASI:
TOLERANSLAR:
DOĞRUSAL:
AÇISAL:

BİTİRME:

KESKİN KENARLARI
PAHLAYIN VE
KIRIN

TEKNİK RESMİ ÖLÇEKLENDİRMEYİN

REVİZYON

| İSİM | İMZA | TARİH |
|--------|------|-------|
| ÇİZEN | | |
| DENET. | | |
| ONAY. | | |
| ÜRET. | | |
| KALİTE | | |

BAŞLIK:

RESİM NO.

MASSEY KİT

A3

AĞIRLIK:

ÖLÇEK:1:50

SAYFA 1 / 1

4

3

2

1

4

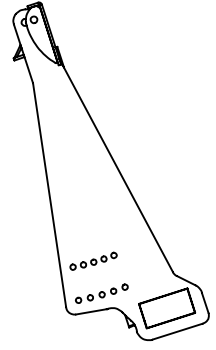
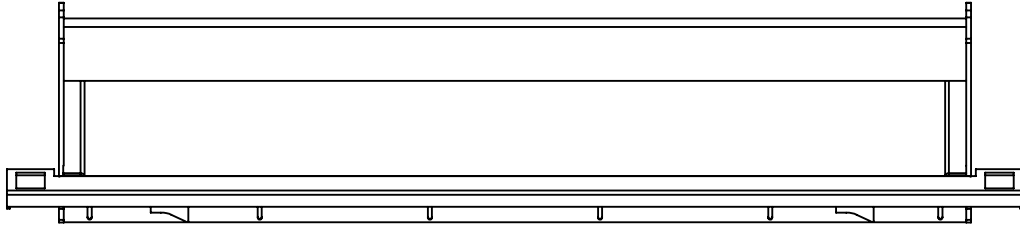
3

2

1

F

F

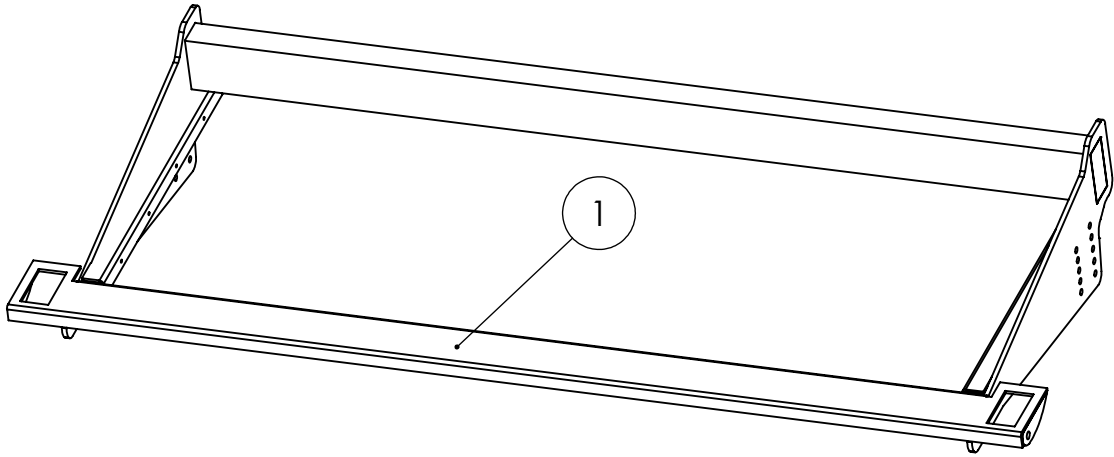


E

E

D

D



C

C

| ÖĞE NO. | PARÇA NUMARASI | TANIM | MİKT. |
|---------|----------------|-------|-------|
| 1 | KBR-N-1001 | | 1 |
| 2 | KBR-N-1002 | | 2 |
| 3 | KBR-N-1003 | | 2 |
| 4 | KBR-N-1004 | | 2 |
| 5 | KBR-N-1005 | | 2 |
| 6 | KBR-N-1006 | | 1 |

B

B

AKSİ BELİRTİLMEDİĞİ SÜRECE:
BOYUTLAR MİLMETREDİR
YÜZEY CİLASI:
TOLERANSLAR:
DOĞRUSAL:
AÇISAL:

BİTİRME:

KESKİN KENARLARI
PAHLAYIN VE
KIRIN

TEKNİK RESMİ ÖLÇEKLENDİRMEYİN

REVİZYON

| İSİM | İMZA | TARİH |
|--------|------|-------|
| ÇİZEN | | |
| DENET. | | |
| ONAY. | | |
| ÜRET. | | |
| KALİTE | | |

BAŞLIK:

RESİM NO.

NEW HOLLAND MONTAJ

A3

MALZEME:

AĞIRLIK:

ÖLÇEK:1:50

SAYFA 1 / 1

A

A

4

3

2

1